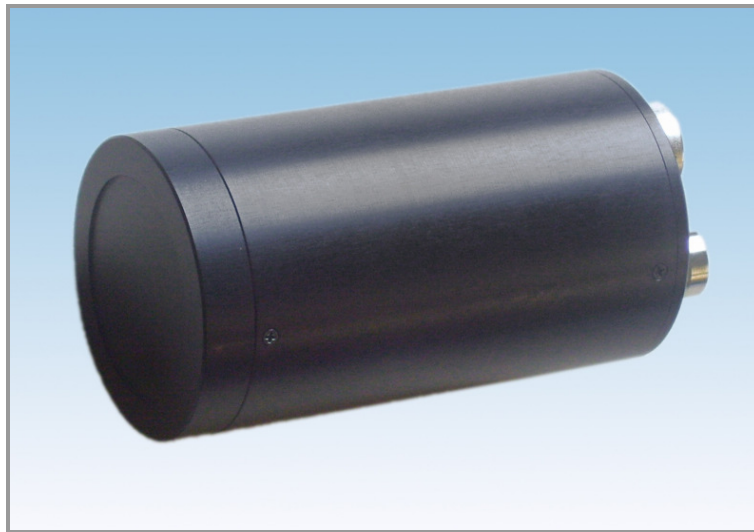


Miniature X-Ray Camera



μHR0 X-Ray

Applications

- X-ray imaging for PCB control and drilling
- X-ray transmission of small objects
- Beam adjustments
- Special version "μHR0 x-diag" for beam-analysis
- X-ray imaging of diffraction or spectral patterns
- Open face versions for UV and electron detection on request

Features

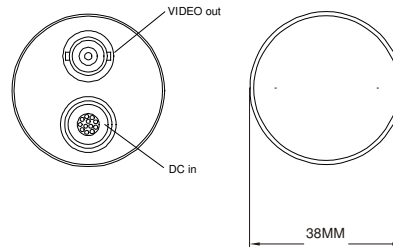
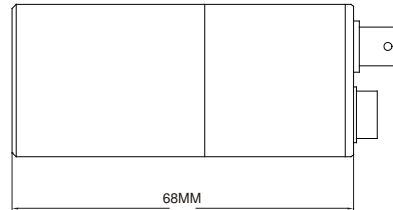
- Very compact design
- Analog video signal in different standards (CCIR and EIA)
- Live imaging on visual display unit, no need of PC, or via frame grabber
- High resolution version available
- Customised versions (phosphor thickness, input window, trigger) available

Low Light Cameras Special Purpose Cameras	Short Exposure Cameras Pulse Generators	Fiber Optical Coupling Phosphor Coatings	Detector and Camera Upgrades and Customised Prototyping
Solar Blind & Visible Image Intensifiers	UV & X-Ray Cameras Corona Detection Cameras	Customised Facilities & Equipment	Vacuum & Open MCP Detectors

Technical data μ HR0-X-Ray

CCIR 1/2" Camera	
CCD format	1/2"
CCD pixel	752 x 582 (H x V)
CCD pixel size	8,6 μ m x 8,3 μ m (H x V)
Output	standard CCIR (exposure 20ms), optional external Trigger/Shutter with WEN output signal for long exposure control (1 ms .. about 1000 ms) EIA output on request

Camera Specification	
Field of view	20 mm x 15 mm
Phosphor Coating	P43
Input window	Aluminium 0,5 mm or different material on customer request (also "open face" for UV or electron sensitivity)
Typical sensitivity range	about 20 to 100 keV (x-ray, other on request)
Resolution	about 50 μ m (preliminary)
Dimensions camera head	Very compact design: 38 mm diameter and 68 mm length



Camera can be modified on request to fit to customer requirements (please specify the radiation to be detected):

- type and thickness of coating
- additional layers
- type and thickness of input window
- electronic camera interface

Special extra high-resolution version " μ HR0 x-diag" for beam-analysis

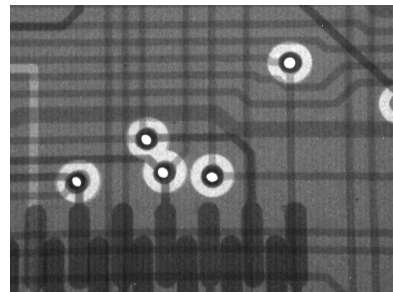
Resolution-optimised setup:
Resolution: about 5 to 10 μ m
Field of view: 1,8 mm x 1.4 mm.

For customised versions please contact us. Based on our engineering and production facilities special versions can be realised.

12 pole Hirose connector	
1	GND
2	Power +12V DC
3	Video Output (Ground)
4	Video Output (Signal)
10	WEN output (Signal) -optional-
11	Trigger pulse input (Signal) -optional-



BNC connector	
	CVS video out, 1 Vpp/75 Ohm
	GND



Low Light Cameras Special Purpose Cameras	Short Exposure Cameras Pulse Generators	Fiber Optical Coupling Phosphor Coatings	Detector and Camera Upgrades and Customised Prototyping
Solar Blind & Visible Image Intensifiers	UV & X-Ray Cameras Corona Detection Cameras	Customised Facilities & Equipment	Vacuum & Open MCP Detectors